

39, Trinity Street, Belle Vue, Shrewsbury, SY3 7PF

£650 Per Month



39, Trinity Street, Belle Vue, Shrewsbury, SY3 7PF

£650 Per Month

VIRTUAL TOUR AVAILABLE - Spacious two bedroom mid-terrace house positioned in the popular residential area of Belle Vue. This property is just a short walk from Shrewsbury town centre and benefits from a converted attic providing a further 15 square metres of floor space.

Available: IMMEDIATELY

Description

Comprising: Living room with open fire, dining room with storage cupboards, kitchen with freestanding cooker, fridge, freezer and washing machine, bathroom with shower over bath. Stairs to first floor landing, double bedroom to front, further double bedroom to rear with freestanding wardrobe and stairs to attic room. Front and rear gardens. Shed. Gas central heating. EPC D. Council Tax Band B.



Unfurnished

Council Tax Band: B

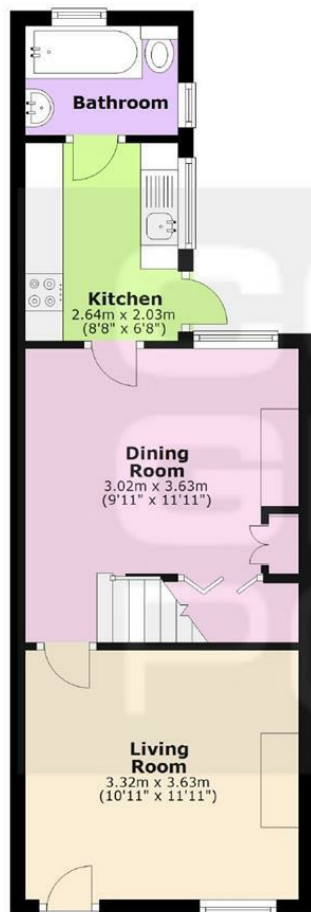
Available: 3rd December 2022

EPC: D

Floor Plans

Ground Floor

Approx. 35.4 sq. metres (380.7 sq. feet)



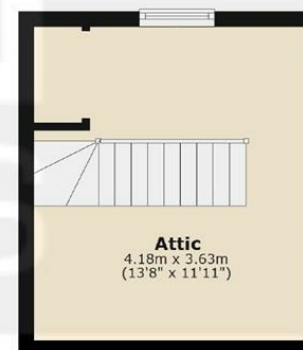
First Floor

Approx. 26.3 sq. metres (282.8 sq. feet)



Second Floor

Approx. 15.2 sq. metres (163.4 sq. feet)



Total area: approx. 76.8 sq. metres (826.9 sq. feet)

We accept no responsibility for any mistake or inaccuracy contained within the floorplan. The floorplan is provided as a guide only and should be taken as an illustration only. The measurements, contents and positioning are approximations only and provided as a guidance tool and not an exact replication of the property.
Plan produced using PlanUp.

These particulars, whilst believed to be accurate are set out as a general outline only for guidance and do not constitute any part of an offer or contract. Intending purchasers should not rely on them as statements of representation of fact, but must satisfy themselves by inspection or otherwise as to their accuracy. No person in this firm's employment has the authority to make or give any representation or warranty in respect of the property.